

TABLE OF CONTENTS

Vision, Mission and Motto	01
Background	03
Message from the Chairman of Board of Governors	11
Message from the Chairman of Institute Council	12
President's Overview	13
Governance and Organisation	15
Board of Governors	17
Institute Council	18
Management Team	19
Highlights of the Year	21
Professional Education	23
Quality Assurance System	24
Career Planning Education	25
Serving the Community	27
Advancing Research Strengths	31
Overseas Collaboration	37
Finance	39
Facts and Figures	41
Scholarships	43
Financial Assistance for Students	44
Appendices	45
Selected Research and Publication List	46

自強不息

AD Destinatum Persequor

I do not consider that I have made it my own; but one thing I do, forgetting what lies behind and straining forward to what lies ahead, I press on toward the goal for the prize of the upward call of God in Christ Jesus.

<Phil 3:13 – 14>

我並不以為我已經奪得，我只顧一件事：即忘盡我背後的，只向在我前面的奔馳，為達到目標，為爭取天主在基督耶穌內召我向上爭奪的獎品。

<斐 3:13:-14>

VISION

The vision of Caritas Institute of Higher Education (CIHE) is to nurture graduates who are not only professionally well-trained and academically well-educated, but who can also contribute to the social and moral well-being of society. We reach out to those who are underserved to realise their potential. Our life education programmes, based on the Catholic tradition, aim to enable learners to excel in a holistic manner, especially where “Service with Love” makes a difference. We aspire to become the Saint Francis University, and a well-respected and internationally recognised institution in the longer term.

MISSION

The mission of the Institute is embodied in our three-pronged approach to add value and stay relevant to young people:

- Professional Development — This is particularly important as many of our students come from the grass root. Readiness for a professional career enhances their chances of upward mobility and hope in life. Wherever appropriate, our programmes aim to prepare graduates for professional recognition on par with their counterparts from publicly-funded institutions.
- Sound Education — Through getting our programmes accredited through The Hong Kong Council for Accreditation of Academic and Vocational Qualifications (HKCAAVQ), we strive to adopt the best practices in Organisational Quality Assurance and Enhancement, and to institutionalise continuous self-improvements in our management practices.
- Positive Life Values – Our motto of “Ad Destinatum Persequor” (自強不息) is to inspire our students to stride unceasingly for self-enhancement. Inculcating this spirit of life-time learning will put them in good stead in a future, where knowledge will get superseded quickly by fast changing technological and social changes. This spirit is also vital in empowering the last, the least and the lost to realise their potential.

BACKGROUND

Formerly known as Caritas Francis Hsu College (CFHC), CIHE commenced its operations in 1985. In 1990, the College was approved by the then Hong Kong Government to provide post-secondary education, and had since offered three-year Professional Diploma programmes, in the disciplines of Accounting Studies, Company Secretaryship and Administration, Computing Studies, and Translation and Interpretation. On 8 August 2001, the College was accorded the registration status as an approved post-secondary college (under the Post-Secondary Colleges Ordinance, Cap. 320), and its four Higher Diploma programmes, modified from the three-year Professional Diploma programmes, were validated by the then Hong Kong Council for Academic Accreditation (HKCAA) (now renamed as HKCAAVQ) as comparable in standard and standing with those offered by other local and overseas institutes.

The provision of Associate Degree (AD) programmes from the 2002/03 academic year marked a new milestone in the College's academic development: the Associate of Social Science in Social Work (ASSSW) Programme (full-time mode) was launched in the 2004/05 academic year, followed by the part-time mode in 2009/10. New provision in 2009/10 included the Higher Diploma in Human Services (HDHS) Programme.



Upgrade to Degree–conferring Status

In October 2010, the College underwent an institutional review conducted by the HKCAAVQ for upgrading its registration to degree–conferring status and for the provision of Bachelor’s Degree programmes. Its first undergraduate degree programme, the Bachelor of Business Administration (Honours) (BBA) Programme, with three study streams in Accountancy, Corporate Management, and Information Systems, was validated by the HKCAAVQ in December 2010 and launched in the 2011/12 academic year. Subsequently, the Chief Executive in Council granted approval to the College to change its name to Caritas Institute of Higher Education with effect from 27 May 2011.

The 2011/12 academic year also marked the success of CIHE, firstly, in procuring a Government land grant of the site adjacent to the current campus of Caritas Bianchi College of Careers (CBCC) at Tseung Kwan O, and secondly, in undergoing a number of accreditation exercises to enhance its sub–degree provision as well as expand its BBA Programme with three additional study streams in Marketing and Event Management, Hotel Management, and Tourism Management.





The Institute continued to undergo programme accreditation exercises mainly to expand its degree programme portfolio. In the 2012/13 academic year, two new programmes, namely, the Bachelor of Arts (Honours) in Language and Liberal Studies (BA(LangLib)), and the Bachelor of Social Sciences (Honours) (BSocSc), were validated by the HKCAAVQ. The BA (LangLib) Programme comprising three study streams, namely, Chinese and Philosophy, English and Communication, and Bilingual Studies, was launched in 2013/14. The BSocSc Programme also comprises three study streams, namely, Community Studies, and Psychology that were launched in 2013/14, and Social Work that was launched in 2014/15 after its professional accreditation by the Social Workers Registration Board (SWRB).

The Institute underwent the validation of its Bachelor of Nursing (Honours) (BNurs) Programme in the 2013/14 academic year. The professional accreditation of the BNurs by the Nursing Council of Hong Kong (NCHK) was completed in 2014/15, and this programme was launched in the second semester of that academic year.

In 2014/15, two more new programmes, namely, the Bachelor of Science (Honours) in Digital Entertainment (BSc(DE)) and the Bachelor of Social Work (Honours) (BSW), were validated by the HKCAAVQ.

The BSW Programme successfully underwent its qualification recognition by the SWRB in mid-2016, and was launched in January 2017. Another new top-up programme, Bachelor of Health Sciences (Honours) (BHS), was validated by the HKCAAVQ and the first cohort of students was recruited in 2017/18.





CIHE Campus Full Operation

The new campus of CIHE (designed to be integrated with the adjoining campus of CBCC) also came into full operation in the 2017/18 academic year, providing learners with up-to-date teaching and learning facilities.

The Institute has been developing its academic provisions in the discipline of Early Childhood Education (ECE) since late 2016. In accordance with its plan, the Higher Diploma in Early Childhood Education (HDECE) was accredited and approved in 2017/18, and was launched in the summer of 2018. The Bachelor of Education (Honours) in Early Childhood Education (BEdeCE) was accredited by the HKCAAVQ in 2019, and is now undergoing the final approval, before its planned launch in the summer of 2020.

The current programme portfolio of CIHE mainly comprises programmes that are pitched at Hong Kong Qualifications Framework (HKQF) Level 5 or above whereas the current programme portfolio of its adjoining sister CBCC mainly comprises programmes that are pitched at HKQF Level 4 or below. Coordinated articulation routes between CIHE and CBCC programmes in a two-college system, therefore, afford learners with flexible, multiple pathways of upward mobility, and provide CIHE with a student feeder mechanism.





Developing Master's Degree Programmes

In working vigorously towards becoming the university title in Hong Kong (to be known as Saint Francis University), the Institute is continuously strengthening its academic structure and rigour, and diversifying its academic provision to encompass a clearly-positioned portfolio of Bachelor's Degree programmes. In addition, the Institute would be developing selectively Master's Degree programmes, for which the expertise is in place. In parallel, the Institute is aiming for the third stage of the HKCAAVQ's quality assurance model, by planning to undergo Programme Area Accreditation (PAA) in three programme areas to attain self-accreditation status in diverse areas at HKQF Level 5, as an essential step towards the establishment of the Saint Francis University.

While placing appropriate emphases on their respective disciplinary areas, all the study programmes of CIHE comprise General Education (GE) courses as an integral component of their curricula, with the aim of widening students' exposure to meet different challenges in life, and to enhance their understanding of the different approaches to knowledge as well as the different perspectives and attitudes on issues relevant to collegiate education.

To pave the way for its future development, CIHE has undergone a revision of its academic structure by replacing the former academic departments with schools. At present, in CIHE, the following five academic schools are responsible for the offering of the abovementioned study programmes:

School of
Business
and
Hospitality
Management

School of
Computing
and
Information
Sciences

School of
Health
Sciences

School of
Humanities
and
Languages

School of
Social
Sciences

Top-up Degree Programmes Collaborate with Local / Overseas Universities

Besides locally-accredited study programmes, CIHE has been offering top-up degree programmes in collaboration with local / overseas universities since the early 1990s. These collaborative programmes as well as other extramural courses are administered by the Centre for Advanced and Professional Studies (CAPS) of the Institute, and are delivered with support from the various academic units.

The Institute anticipates playing a dual role in its plan for future development. It intends to assume a leading role in forging cooperation, coordination and consolidation within the Catholic secondary education sector as well as the Caritas education community, and to provide the highest strata of the educational ladder within these sectors. At the same time, the Institute will fill a special role in the post-secondary education system of Hong Kong by providing access at both sub-degree and degree levels for needy students of the Hong Kong community.



明愛專上學院

Message from the Chairman of Board of Governors

The growing process is often a long and winding road. This is not only true for individuals but also for CIHE, which has fought through a lot of challenges as they developed over the past years.

Established in 1985, CIHE has been committed in promoting whole person education for young people and catering to different learning needs through educational programmes with diversity and quality. Spanning 35 specialised disciplines, the choices of programmes offered by CIHE encompass 12 Bachelor's Degree programmes and 2 Higher Diploma programmes.

In line with the rigor of quality assurance demonstrated by its Bachelor of Business Administration programme, CIHE has been awarded the self-accrediting status at Hong Kong Qualifications Framework (HKQF) Level 5 by the Hong Kong Council for Accreditation of Academic and Vocational Qualifications in the programme area of General Business Administration and Social Work. It is also aiming to attain the self-accrediting status in the second programme area of Social Work, and third programme area of Information and Communication Technology, to satisfy the requirements for the goal of becoming Saint Francis University.

CIHE will remain steadfast in its vision of whole person education, not only preparing young people academically and professionally, but also nurturing them for contributing to the moral wellbeing of society.

I sincerely hope that CIHE will continue to grow in line with the commitment to “Love in the Service of Hope”, the core value of Caritas-Hong Kong.

His Eminence John Cardinal TONG
Apostolic Administrator of the Diocese of Hong Kong

Message from the Chairman of Institute Council

Time flies and I am pleased to present this annual report for the third time as the Chairman of the Council of the Institute.

With no prior warning, the pandemic brought unprecedented impact to our lives in 2020 as it did to people around the world. The Institute overcame the adversities by adjusting ourselves and adopted new norms such as working-from-home and online delivery of classes.

25.8% increase student intake

With the concerted efforts of staff under the leadership of the President, CIHE made a number of significant achievements in the reporting period which were critical for the journey towards Saint Francis University. These included but were not limited to the self-accreditation status in Social Work after our second successful Programme Area Accreditation exercise; a 25.8 per-cent increase in student intake over the previous academic year, which was very encouraging in an environment of declining HKDSE student population; successful competitive research grant applications which allowed us to continue to enhance our research capability and mentoring opportunities for younger researchers; approval of new programmes with strong market demand for launch in 2020/21 and 2021/22; and additional infrastructure to improve the students' learning experiences and teaching quality.

It was also encouraging when the Institute received monetary donations and gifts-in-kinds from donors in a timely manner to help relieve the financial hardship and worries of the needy students and their families. This was a testimony that the worst of times could also be the best of times for witnessing the Institute's motto of "Service with Love".

The achievements did not come by chance; they were the generous community support we received and the fruit of the hard work, resilience and positive team spirit of the CIHE community. We should uphold these virtues in facing the challenges ahead.

I take opportunity to record my profound gratitude to the Board of Governors and members of the Council, donors, staff, students, alumni and friends for their continuous support. We shall work hand in hand towards becoming Saint Francis University.

Denis CHANG
CBE, QC, SC, JP, Hon. LLD
Council Chairman

President's Overview

2020 saw unprecedented challenges and difficulties around the world, and inevitably CIHE was also affected.

While COVID-19 threatened to put campus life to a standstill, the CIHE team worked hard to minimise disruptions to student progress and graduation by continuing with teaching and learning through the hybrid use of video conferencing and online learning systems, and delivery of select face-to-face classes and assessments with suitable health precautions to protect the safety of teachers and students.

Working and studying mode change

We shifted the paradigm from working-from-home to alternative delivery modes, which was important for support services to be maintained, engagement of students to be stepped up, and the campus to be kept open throughout the year. This mindset also enabled us to advance staff training as well as e-learning, and made a number of achievements.

We achieved in 2019/20 the self-accrediting status in two of the three requisite programme areas for our goal of Saint Francis University. Both General Business Administration (GBA) and Social Work won this recognition after extensive Programme Area Accreditation exercises by the Hong Kong Council for Accreditation of Academic and Vocational Qualifications (HKCAAVQ).

New programmes

Consistent with our education programme strategy of catering to areas of student and societal needs to enable more young men and women to benefit from and to support the socio-economic development of Hong Kong, five new degree and one new higher diploma programmes were approved by HKCAAVQ, namely:

- Bachelor of Science (Honours) in Physiotherapy (BScPT)*
- Bachelor of Education (Honours) in Early Childhood Education (BEdeCE)
- Bachelor of Science (Honours) in Artificial Intelligence (BScAI)
- Bachelor of Arts (Honours) in Translation Technology (BATT)
- Bachelor of Entrepreneurial Management (Honours) in Design Business (BEMDB)
- Higher Diploma in Enrolled Nursing (General) (HDEN)*

(* with Government SSSDP subsidies)

Among the above, the BATT programme is the first-of-its-kinds in Hong Kong, and the BScAI programme is the first comprehensive AI degree programme in the self-financing sector. BEMDB is the first self-accredited degree programme of CIHE under our self-accreditation status in GBA.

Two programmes (marked with * above) joined our existing list of five programmes, eligible for student financial support from the Study Subsidy Scheme for Designated Professions/Sectors (SSSDP), greatly easing the financial burden of students and making

the net fees payable after deduction of SSSDP subsidy, close to or the same as those of comparable programmes in publicly-funded institutions. HDEN is scheduled to be launched in 2021/22 while the other six programmes will launch in 2020/21.

Becoming the largest provider of RN programmes

A 25.8% increase in the student intake was achieved in 2019/20 as compared to 2018/19, which was encouraging in the climate of continual declining HKDSE student population. We have also become the largest Registered Nurse Programme provider in Hong Kong.

In terms of continuous enhancement of research and scholarship, we have been enhancing our faculty profile by attracting and retaining experienced as well as younger academics, and enhancing planning as well as support for research and scholarly activities. These efforts were evidenced by our successful applications for in 2019/20 as follows:

- Award of three Faculty Development Scheme (FDS) projects under the Competitive Research Funding Schemes for the Local Self-financing Degree Sector of the Research Grant Council (RGC);
- Award of an Institutional Development Scheme (IDS) project, also under RGC, for the Establishment of a Distributed Artificial Intelligence (AI) Laboratory for Interdisciplinary Research;
- Two open-ended projects for CIHE in the Quality Enhancement Support Scheme (QESS); and
- A dedicated fund being set up from the Research Matching Grant Scheme at the institutional level for strategic and development institutional projects.

Community Health Clinic and Student Support

In addition, the Community Health Clinic was established to support student learning of practical skills, and continuous professional development of staff in the nursing programmes.

To support students who suffered from financial hardship owing to wide-spread loss of part-time employment opportunities and their need for disinfectants and other protective supplies for essential practicum during the pandemic, the Project SCORE Emergency Fund was launched and was supported by many in the community who contributed monetary donations as well as gifts-in-kind.

Conclusion

My heart-felt appreciation goes to each and every one of our generous benefactors and supporters, who bring hope in a time of despairs and losses around the world. I would also like to thank our Board and Council members as well as staff for their unwavering commitment to nurturing graduates who are not only academically and professionally well-equipped, but also ready to contribute to the well-being of the community.

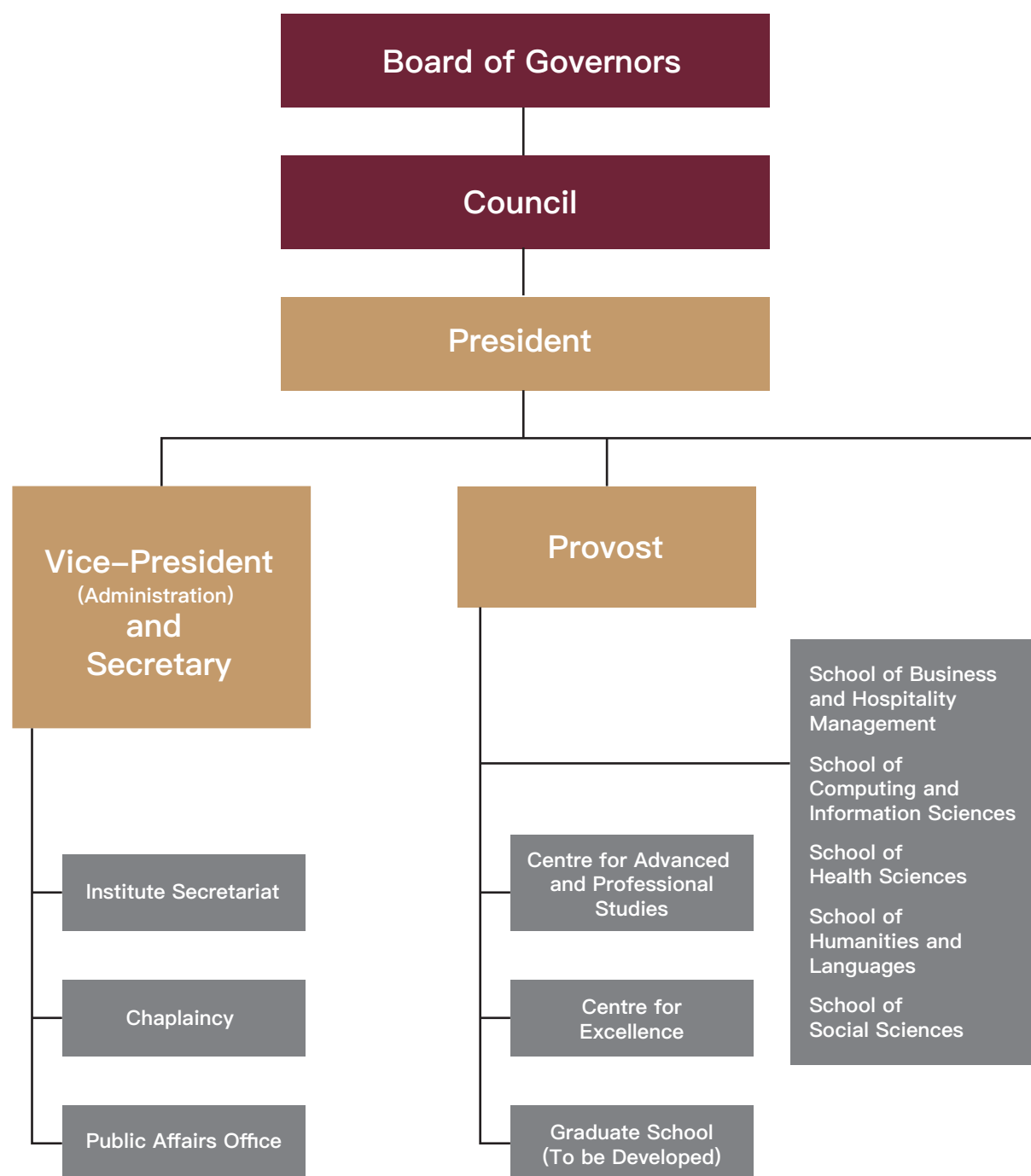
Last but not least, I would like to record my admiration for the can-do spirit of our students who have been carrying on with their unceasing pursuit of self-enhancement throughout 2019–20, learning, loving and, I am sure, in time leading in the post-pandemic new norm.

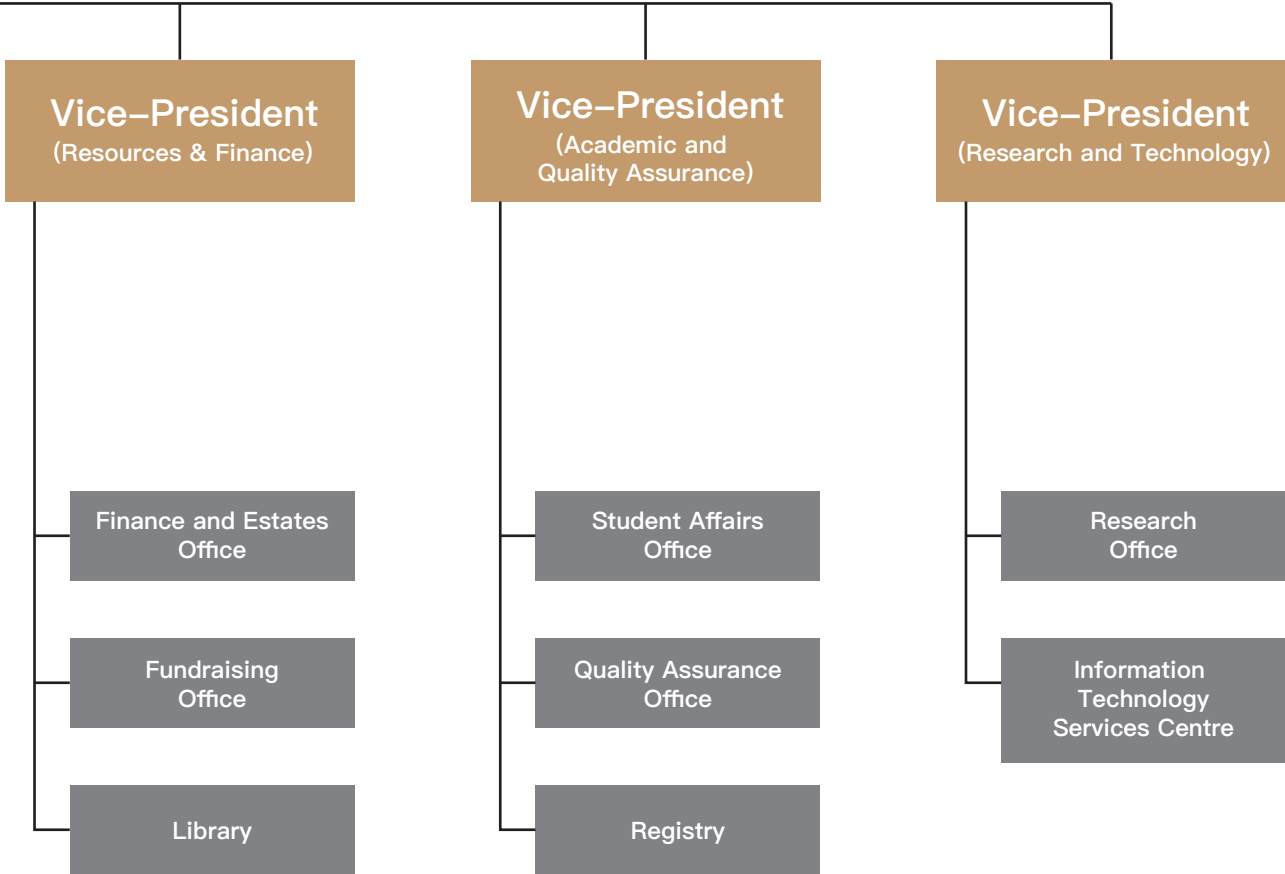
Dr. Kim MAK, BBS, JP

Governance and Organisation

CIHE is managed under a common governance and organisational structure.

The Board of Governors, as the supreme governing body of the Institute, and the Council, as the executive body, are at the apex of the Governance/Committee Structure as well as the Organisational Structure. In each academic year, the Board of Governors holds at least two meetings, whereas the Council meets four times.







Board of Governors

Chairperson	His Eminence John Cardinal TONG
Vice-Chairperson	Rev. Peter CHOY
Treasurer	Mr. Joseph T F HUI
Ex-officio Members	Rev. Joseph T L YIM Dr. Kim MAK, BBS, JP Mr. Denis CHANG, CBE, QC, SC, JP, Hon. LLD Dr. Louis CHOY Dr. Leo CHUANG Mr. Michael CHUANG
Members	Prof. KUAN Hsin Chi Mr. Francis LAW Prof. Vitus LEUNG Dr. Jacinto TONG Rev. John B TSANG Prof. Rosie YOUNG, GBM, GBS, CBE, JP



Institute Council

Chairperson	Mr. Denis CHANG, CBE, QC, SC, JP, Hon. LLD
Vice-Chairperson	Rev. Joseph T L YIM
Treasurer	Mr. Joseph T F HUI
Ex-officio Members	Ms. FU Wing Lam Dr. Kim MAK, BBS, JP Dr. Carol CHAN Dr. Louis CHOY Rev. Peter CHOY Mr. Michael CHUANG Prof. Frederick HO Wing Huen, SBS, OBE Prof. KUAN Hsin Chi
Members	Mr. Frederick LAI Wing Hoi, JP Mr. Peter S T LEE, BBS, JP Mr. Peter Y W LEE Dr. Helen TINSLEY Rev. John B TSANG Prof. TSUI Ming Sum Prof. Rosie YOUNG, GBM, GBS, CBE, JP Prof. Susana YUEN



4,400* STUDENTS ACROSS CIHE & CBCC

Pharmacy

Largest Registered Nurses' School

Computing Curriculum Towards AI

Youth Development TREN

Management Team



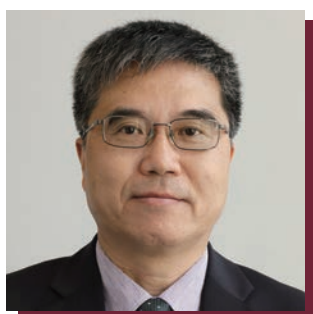
President

Dr. Kim MAK, BBS, JP



Provost

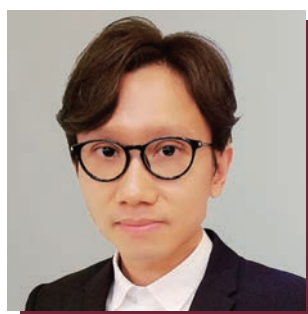
Prof. Annie BLIGH



Vice-President

(Academic and Quality Assurance)

Dr. Dennis LAW



Vice-President

(Resources & Finance)

Mr. Manhoe CHAN



Vice-President

(Administration) and Secretary

Dr. Kat LEUNG

The Third Annual Learning and Teaching Symposium



On 7 May 2020, CIHE invited a few keynote speakers to share their experiences on how they overcome the adversity using the power of e-learning and online teaching with an added human touch at The 3rd Annual Learning and Teaching Symposium. They included Professor PONG Ting Chuen of HKUST, Professor P.C. WONG of HSUHK and Mr. Ben CHAN of Microsoft. They brought audience new insight on e-learning based on pedagogical innovation, using online tools for teaching, collaboration and engagement.

"Ten Good Books" 2019



Compiled by Professor CHAN Sin Wai, Dean and Professor of the School of Humanities and Languages, "A New Comprehensive Cantonese–Putonghua–English Dictionary" is the first translation reference book providing Putonghua and English equivalents of Cantonese words and expressions and was selected as one of the Ten Good Books in 2019. The dictionary contains nearly 3,000 headwords, over 15,000 entries, and over 1,600 common Cantonese expressions and sayings, colloquialisms, idioms, and end-clippers. Supplemented with corresponding Putonghua and English words and phrases, Professor CHAN's book highlights the diverse biliterate and trilingual language culture of Hong Kong.

Professor CHAN's work is featured with a special compilation technique, where entries and sub-entries are arranged in normal and reverse order. By showing their context and collocation, it can help readers deepen their understanding of the usage of words or phrases.

Saint Francis Teaching Excellence Awards



Saint Francis Teaching Excellence Award is established to recognise academic staff members of CIHE who demonstrated an outstanding level of teaching in the academic year. This year, two awards went respectively to Mr LO Yu Keung Wilson (Social Sciences) and Ms LEUNG Sik Yee Dion (Health Sciences) for their outstanding teaching practices. The awardees engaged colleagues with their inspirational sharing of good practices in teaching and learning, and their innovative approaches to support the learning of students.

COVID-19 Webinars Series



In July 2020, Rita Tong Liu School of Business and Hospitality Management and Career Centre had jointly organised 8 free webinars. A total of 8 renowned guest speakers were invited to share the view of the impacts of COVID-19 on the Hong Kong and Global economy and business survival and gave advices to the participants who come from various industries as well as the fresh graduates.



START ORIENTATIONS
CIHE * CBCC

Professional Education



During the academic year 2019/20, CIHE continued its commitment on offering varied professional training under the categories of Local Professional Collaborative Programmes, Professional Training Programmes, and Religious and Life Education Programmes. Such training programmes serve the public by

catering to different groups of learners based on their interest for professional enrichment. The administration of these professional training is supported by CAPS of the Institute.

Local Collaborative Programmes include professional training programmes conducted in collaboration among local authorities, professional bodies and Schools/Departments of the Institute. These programmes encompassed Health Care and Nursing, Traffic Engineering, Mental Health Practice, Clinical Pastoral Education, and School Administration.

Quality Assurance System

Regular Review and Enhancement of Quality Assurance System

The Institute regularly reviews its Quality Assurance System (QAS) to maintain its fitness for purpose. This regular review of QAS has been conducted in light of the current practice in the post-secondary education sector and the Institute's recent development together with CBCC. Recently, the Institute has reviewed and revised/developed its major policies in regard to its teaching, learning and assessment activities, as well as the capacity to handle emergencies in its operations. The relevant policies and guidelines are placed in the Staff Portal and Student Portal for the staff members and students' easy reference.

Strengthening of Internal Accreditation / Re-accreditation

The Institute has also strengthened its internal programme accreditation or re-accreditation arrangements for programmes falling within programme areas with approved self-accreditation status, so as to assure the quality of these programmes for which external accreditation is not needed, and to demonstrate

the Institute's self-accrediting competency in the programme areas concerned.

Improvement of Annual Review and Planning Cycle

Based on the annual review of an academic year and with reference to the respective key performance indicators (KPIs), the academic and non-academic units of the Institute prepare their operational plans and risk registers for discussion before implementation of the operational plan, risk mitigation measures and other improvement initiatives for the following academic year. The operational plans and risk registers of academic units are subject to review by the Quality Assurance Committee (Academic) and the Academic Board as appropriate. The operational plans and risk registers of non-academic units are subject to review by the Quality Assurance Committee (Administration) and the Management Team as appropriate.

Career Planning Education

The **Career Centre** is the bridge between quality education and successful career for students in CIHE.

In this academic year, the Career Centre provided various career services for students to enhance their employability, which included:

Job Search

Closely working with employer partners, we provided opportunities to students and graduates for internship, placements, summer jobs, part-time jobs and full-time graduate hire.

Events and Activities



We hosted career activities including career talks with individual employers, company visits, speed-networking, sharing sessions, online info-day, online seminars with industry representatives, and many others. We also promote and host various career related competitions and outreach.

Career Training

We provided four series of training to enhance career readiness, namely:



- ① Career Exploration — helping students find their career aspiration
- ② Employment Preparation — preparing for skills needed in job hunting
- ③ The 7 Habits of Highly Effective People ® — enhancing general life skills through licensed corporate training
- ④ Career Skills — equipping students with practical skillsets useful in the workplace

Career Coaching

Individual and small group coaching and career consultation are provided by experienced career advisors to tailor for students' and graduates' needs for employment.





Serving the Community

Rotaract Club

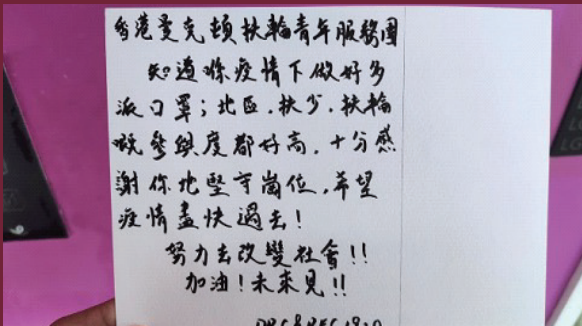
Rotaract Club rings together young people (aged 18 and above) to exchange ideas with leaders in the community, develop leadership and professional skills, and have fun through service. Rotaract members decide how to organise and run their club, manage their own funds, and plan and carry out activities and service projects. Peak Rotaract organised various community care services.

Distributing Surgical Mask, Sterilizer and Health Protection Booklets

Peak Rotaract sent 200 Health Protection Packages including surgical mask, sterilizer, and one health protection booklet to needy people including the elderly, the homeless and the street cleaners in Kwun Tong district on 17 March 2020.



Summer Tutorial Classes for Primary School Children



In midst of the limited supply of surgical masks in the early days of the pandemic, the Rotaract Club took the initiative to help the most needed ones by sending the surgical masks to the Haven of Hope Hospital in Tseung Kwan O.

Students of CIHE in the Rotaract Club took an active part in the community service by repackaging the masks into individually-wrapped ones, and facilitated the distribution of the surgical masks to the Haven of Hope Hospital on 7 May 2020.

Summer Tutorial Classes for Primary School Children



- Students of CIHE Rotaract Club initiated the Summer Program for primary school children who need study help.
- The Summer Tutorial Classes (3-hour each) were held on 6 weekends on the CIHE campus in July and August 2019, serving more than a dozen primary school children from the grass-roots families in the neighbouring community in Tseung Kwan O.
- It was no ordinary tutorial class but Summer Tutorial Classes with fun and games, focused on building rapport with the students and offered support for their academic studies.

Wofoo Leaders' Network

Wofoo Leaders' Network (WLN) is a core project of Wofoo Social Enterprises which is dedicated to promoting youth development, leadership training, civic education and social servicing.

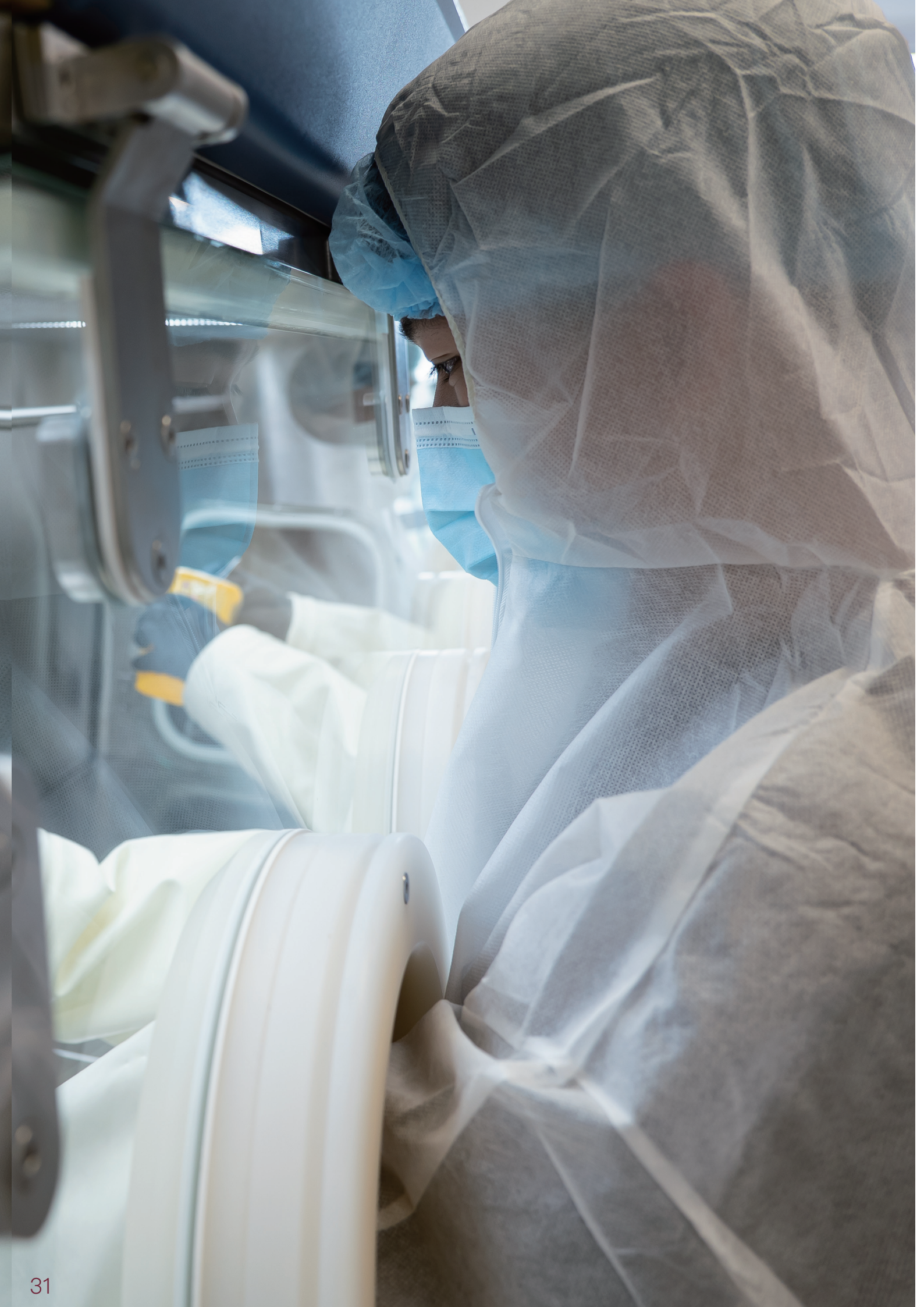
As a member of WLN of CIHE, students will participate in, organize and promote a wide range of activities, enabling them to enhance all-round skills and gain valuable experiences in community service.



VE
N
GE
LD

All of us are smarter than any of us."





Advancing Research Strengths

Research Grants Council (RGC) Competitive Research Funding Schemes

In the 2020/21 RGC Competitive Research Funding Schemes for the Local Self-financing Degree Sector, CIHE secured a total funding amount of HK\$13.69 million with 5 projects under the Faculty Development Scheme (FDS) and 2 projects the Institutional Development Scheme (IDS). RGC funded projects (2020/21 Exercise) are listed below:

Faculty Development Scheme (FDS)

Project No.	Project Title	Principal Investigator
UGC/FDS11/B02/20	Book-Tax Relationships, Tax Avoidance and IPO: Evidence from China	Prof. CHAN Koon Hung
UGC/FDS11/H06/20	An exploratory study on the institutionalization of a case management model for community care services in Hong Kong	Dr. KAN Wing Shan
UGC/FDS11/H09/20	A study on the academic stress of social work students in their fieldwork placement	Dr. CHU Cheong Hay
UGC/FDS11/H13/20	Attitudes towards School-Based Sexuality Education among Secondary School Students and Teachers: An exploration of its Associated Factors	Dr. Anna NG
UGC/FDS11/M01/20	Examining current practices and attitudes of staff towards physical restraint and restraint-free care in institutionalized older persons with and without dementia	Prof. Lisa LOW

Institutional Development Scheme (IDS)

Project No.	Project Title	Project Co-ordinator(s)
UGC/IDS(R)11/20	Establishment of Techno-Humanities Research Centre	Prof. CHAN Sin Wai
UGC/IDS(C)11/E01/20	Creating an Automatic Football Commentary System with Image Recognition and Cantonese Voice Output	Prof. SIU Wan Chi Prof. CHAN Sin Wai

Non-RGC Research Funding Sources

To strengthen the research capacity and enhance the research impact on society, CIHE has secured other external research funding support (\$1.4m, 8 projects) from various public/government competitive funds during the reporting period.

Source of Funding	Project Title	Principal Investigator
Policy Innovation and Co-ordination Office - Public Policy Research Funding Scheme (Special Round)	Ethnic Minorities Made Vocal and Voiceless: Political Participation and Opportunities of Ethnic Minorities During the Anti-Extradition Movement	Prof. CHAN Koon Hung
Association of Hong Kong Nursing Staff - Professional Development Fund	Exploring the factors to develop a conversation tool for end-of-life care practice: Perspectives from healthcare providers and older people	NG Amy Mi-fun
The HK Retirement Schemes Association	Hong Kong retirement protection and services	WONG Yu Cheung
Junior Chamber International (North District) and Sunshine Lutheran Centre	A correlational study between video game monetization, internet gaming disorder, and problem internet gambling among Hong Kong, Taiwan, and Japan game players	CHUNG Yida Yee Ha
Oxfam HK	Study on Elderly Poverty and Employment in Hong Kong	WONG Yu Cheung
Hong Kong Red Cross	Impact Study on Youth Members of Hong Kong Red Cross Uniformed Groups	MA Kooni Yuk Ling
Sai Kung Community Centre	Liveability study in Sai Kung	CHAN Wai Yin
Society for Community Organization	Evaluation study of the "Room for Rent"- Hostels and Activity Centre for homeless singletons pioneer project"	WONG Yu Cheung CHUNG Yida Yee Ha



Internal Research Grant

To reinforce a research culture in the institutions, academic staff are encouraged to apply internal research grant to develop their own research and scholarly activities. CIHE supported 7 academic staff with a total sum HK\$169,450.

Project Title	Principal Investigator
Association of bilberry supplementation on metabolic and cardiovascular disease risk	Stella CHAN
Flipped Classroom in an undergraduate nursing research course: A pilot RCT	Sara POON
The role of attention level in the attentional boost effect (student final year project)	Ricky Au
Digital Knowledge and Mobilisation Network Resources: A case study of mask purchase in Hong Kong during the COVID-2019 crisis (formerly titled: Social Network and Dissemination of Health Information: A case study of mask purchase in Hong Kong during the COVID-2019 crisis)	FUNG Ka Yi
Facebook as a Novel Tool for Continuous Professional Education on Dementia: A pilot randomised controlled trial	CHAN Sau Yi
State responsibility and old-age care in Urban China	CHEUNG Ada Pui Ling
Engaging in Community-based Health Promotion Program: Investigation on the Perception of Health Promotion and Professional Development among Nursing Students. A Pilot Study	Minnie SIU
Knowledge, attitude and dietary practices relating to colorectal cancer prevention among Hong Kong citizens	SIU Minnie Mei Yi
The perceptions of school nurse's working practice by the school members in special schools	YIP Ka Huen

In addition, CIHE supported a number of academic staff to attend local and international conferences to cultivate collaborative research culture each year.



Event Organised

Date	Topic	Image	Speaker
11/09/2019	“Absence of Contemplation” and “Binary Thinking Enlightenment” -- Two ways to rethink pre- and post-97 Hong Kong films		LI Siu Kit
	Economic Analyses in Health Care – Not so Patient-friendly?		Bilvick TAI
25/09/2019	Research for funding		CHAN Sin Wai
	Research innovations		Anthony CHAN
09/10/2019	Facility Location Games with Externalities		ZHAO Yingchao
	Support Services for Youth with High Functioning Autism (HFA) in Hong Kong: current developments and the way ahead		Kooni MA
23/10/2019	Research Ethics Workshop on Human Participants		Dr. Emma E. BUCHEL, The Education University of Hong Kong
27/11/2019	Briefing Session on RGC Application 2020/21		Annie BLIGH
11/12/2019	Exploring nominalizations across Chinese and British Media English: Contrasts in syntactic patterns		Hannah LIU
	Searching the one in the crowd - Text mining for cyber youth work		Zeno LEUNG
15/01/2020	Deep-Learning Development via Super-Resolution Imaging		SIU Wan Chi
	A longitudinal evaluation study of a saving scheme to encourage unemployed social security (CSSA) recipients to take up employment		WONG Yu Chueng

Publications

A large number of our faculty members in 5 Schools have published their research findings in major refereed journals, or in monograph series/book titles with renowned publishers.

The focus of research communities in CIHE, are on technology, social, health care, humanities and business research. Selected publications in 2019 are listed in the section of Selected Research and Publication List.

EDB Quality Enhancement Support Scheme

The funding results of Quality Enhancement Support Scheme (QESS) 2020 for self-financing post –secondary sector were announced on 22 June 2020 by the EDB. CIHE was successfully awarded two open-ended projects. The total award to CIHE amounts to \$4,006,891. CIHE and CBCC also won a joint themed-project (\$22,651,590) with Shue Yan University (Lead) and UOW College Hong Kong. The details are given in Table 1.

Project No.	Project Title	Principal Investigator	Amount (HK\$)
Caritas Institute of Higher Education			
2/QESS/2020	Sustainable Teaching and Effective Engagement in Learning (STEEL)	Prof. BLIGH Sim Wan Annie	2,086,470
03/QESS/2020	Establishment of Planning Office	Dr. LAW Chung Sea Dennis	1,920,421
Shue Yan University (Lead), CIHE, CBCC, UOWCHK			
T01/QESS/2020	Development of Online Teaching, Learning and Assessment Solutions	Dr. CHAN Kit Sze Amy	22,651,590

Overseas Collaboration

The Institute collaborates with overseas institutions from UK and Italy to offer relevant and well recognised programmes for Hong Kong community, including

- the top-up BA (Hons) in Fashion and Textile Design, Graphic Design, and Interior Architecture and Design programmes offered with the University of Portsmouth in UK, and

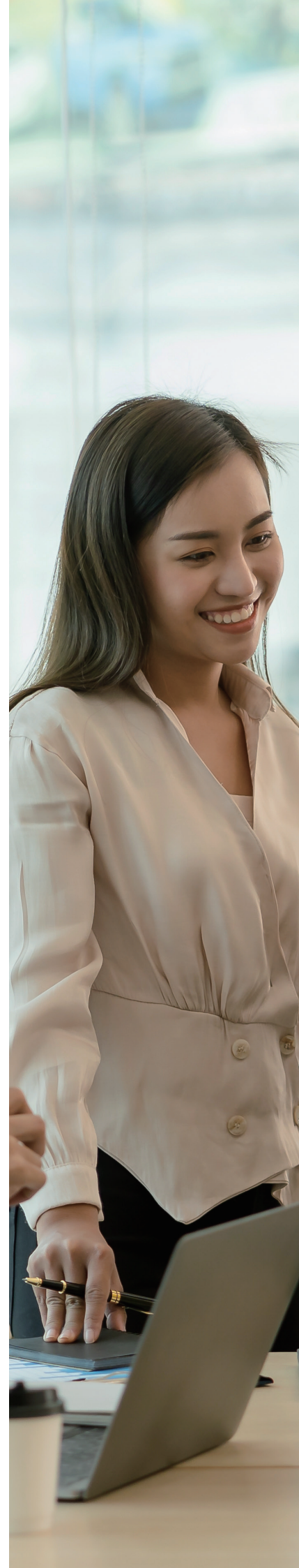


Visiting Scholars from University of Portsmouth for Sharing with Students of the BA (Hons) Design Programmes

- the Summer Course in Ecclesiastical Latin with the Pontifical Institute of Advanced Latin Studies of Salesian Pontifical University in Rome.



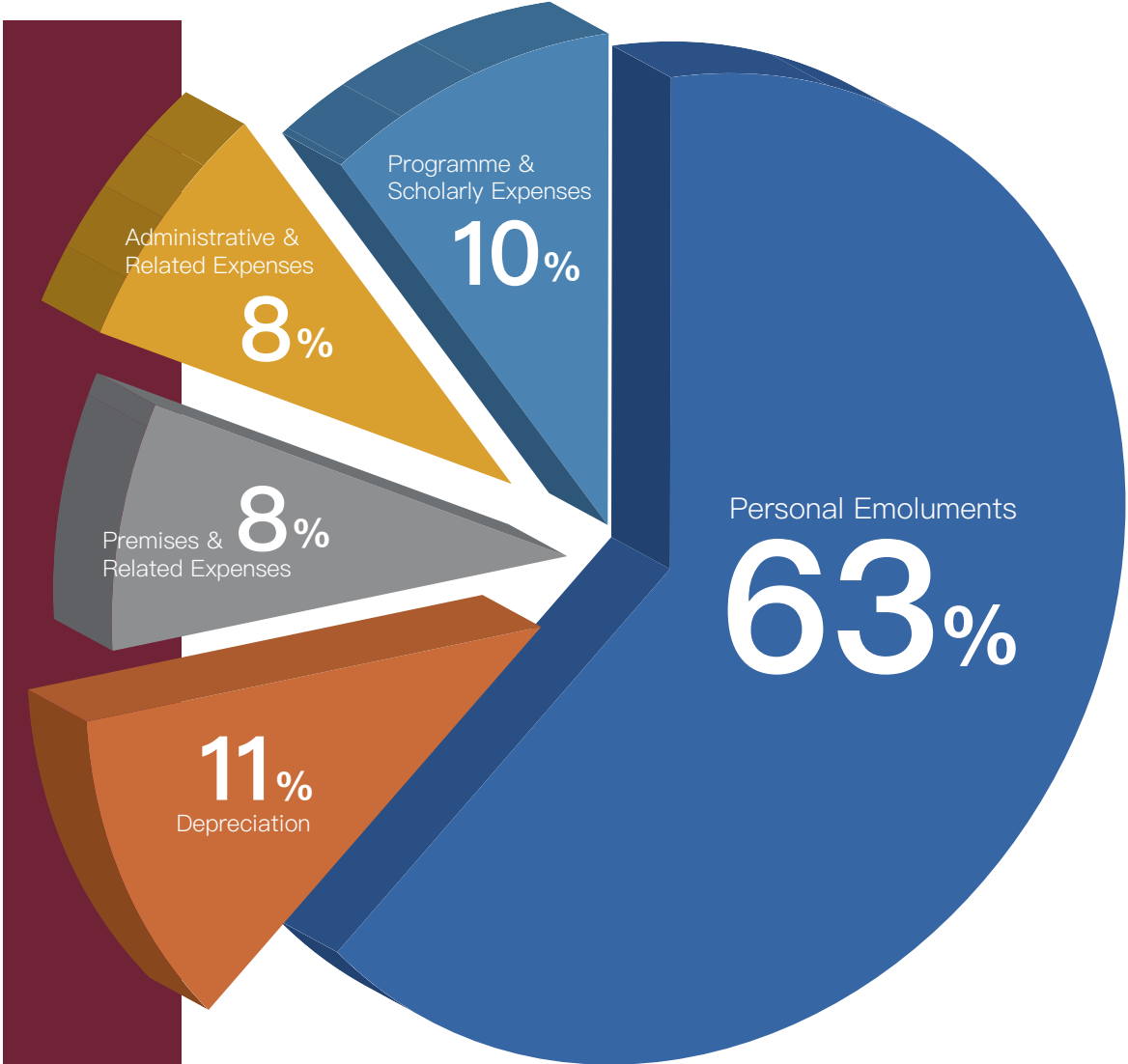
Class Photo with Reverend Professor Miran SAJOVIC in the Summer Course on Ecclesiastical Latin





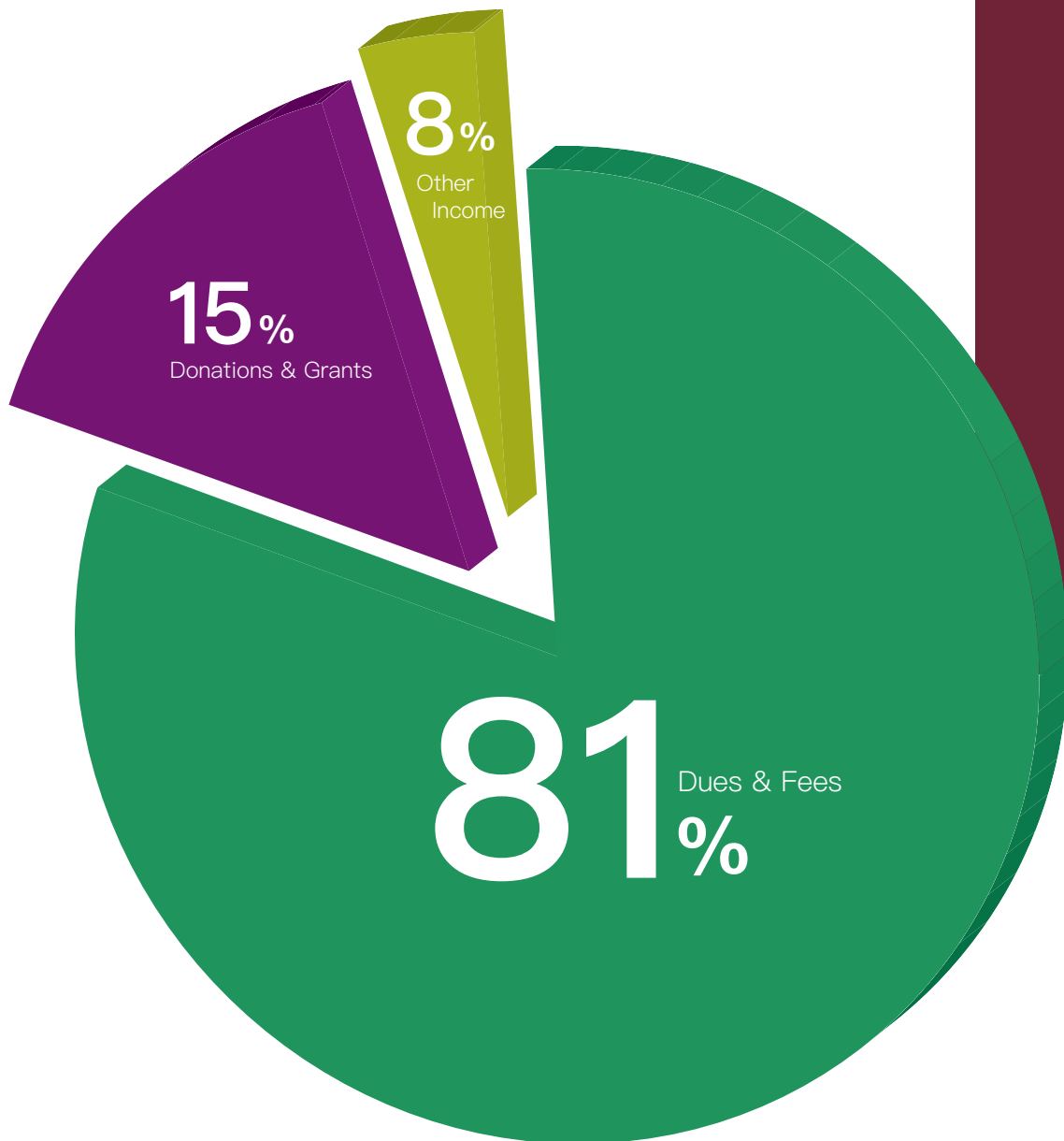
FINANCE

The following charts illustrated a summary of the operating income and expenditure of Caritas Institute of Higher Education for the financial year 2019–20, i.e. from 1 April 2019 to 31 March 2020.



EXPENDITURE

INCOME





Facts and Figures

Students

1.1 Students (Bachelor's Degree Programme)

Admission

Student Admission Statistics

Total Number of Student Admission for All-year Programmes	615
Total Number of Students Admission for Year-1 Programmes	550

Enrolment

Item	All	Male	Female
Total Number of Students	1788	542	1246

Average HKDSE Score of Year-1 Students

Total Number of Applications for All-year Programmes	16.48
--	-------

1.2 Students (Higher Diploma Programme)

Admission

Student Admission Statistics

Total Number of Student Admission for All-year Programmes	268
Total Number of Students Admission for Year-1 Programmes	268

Enrolment

Item	All	Male	Female
Total Number of Students	550	224	326

Average HKDSE Score of Year-1 Students

Total Number of Applications for All-year Programmes	14.37
--	-------

Scholarships

Self-financing Post-secondary Scholarship Scheme (SPSS)

A total of 135 students were awarded the scholarships in the Self-financing Post-secondary Scholarship Scheme (SPSS), which included five types of scholarships – Outstanding Performance Scholarship (OPS), Best Progress Award (BPA), Talent Development Scholarship (TDS), Reaching Out Award (ROA), and Endeavour Scholarship (EDS). They have demonstrated solid academic achievement, talent performance, and service to the community.

Institute Scholarship

To qualify for the scholarship, students must have passed all courses, attained at least 80% attendance rate in all courses, and scored an annual Graded Point Average of at least 3.0 in all courses. Awardees are recommended by the School and approved by the Academic Board.

Chu Chiu Sen Bing Community Service Scholarship

This scholarship aims to encourage students to actively contribute and participate in community service, voluntary work and life education programmes. Nine students with a minimum annual GPA of 2.3 and a demonstrated commitment to the community were awarded. Two students with outstanding achievements were named the top awardees of the scholarship.

Alfar Charitable Trust Scholarship

To support the needy students for completion of their multiple years of studies with CIHE, the Alfar Charitable Trust Scholarship awarded 25 scholarships to the students with financial difficulties. Upon completion of an 8-hour voluntary service and attainment of the minimum GPA requirement of respective years of study, scholarship awardees would be nominated for the scholarships in the following academic year until they complete their study programmes at sub-degree / degree level within a period of 2 to 5 years.

Always Hopes Foundation Scholarship

Twenty-five students were awarded the Always Hopes Foundation Scholarship which was established as an annual scholarship scheme to provide financial support to students studying full time degree programmes in CIHE. Each successful applicant would be able to receive the Scholarship in the subsequent year, upon achieving an academic result better than or equal to the minimum GPA required by the award of the Scholarship each year. In addition, the awardee was encouraged to take part in community service.



Financial Assistance for Students

Extended Non-means-tested Loan Scheme (ENLS)

This scheme is administered by the Student Finance Office of Student Financial Assistance Agency (SFAA – SFO) to provide financial assistance in the form of loan(s) to part-time sub-degree or bachelor’s degree students to settle tuition fees of self-financing programmes.

Financial Assistance for Self-financing Post-secondary Students (FASP) & Non-Means-Tested Loan for Self-financing Post-Secondary Students

This scheme is administered by SFAA – SFO to provide means-tested financial assistance and loan(s) to needy full-time students pursuing locally-accredited, self-financing post-secondary education programmes at the level of sub-degree or bachelor’s degree to settle tuition fees.

Non-means-tested Subsidy Scheme (NMTSS)

Starting from the 2017–18 academic year, the Government provides a non-means annual subsidy for eligible new and continuing students pursuing full-time locally-accredited local and non-local self-financing undergraduate (including top-up degree) programmes in Hong Kong offered by eligible institutions participating in the scheme (except those students already supported under SSSDP). The annual subsidy amount was HK\$31,300 in the 2019/20 academic year.

S. K. Yee Medical Foundation Scheme

This bursary is donated by the S. K. Yee Medical Foundation. It aims to provide relief to five students pursuing Health Sciences related programme with financial difficulties of HK\$10,000.



Appendices



Selected Research and Publication List

- 1 Au, R. K. C., & Tang, V. K. Y. (2019). The effect of sexual arousal and emotional arousal on working memory. *Cogent Psychology*, 6(1):1645260, 1–20.
- 2 Chan, C. Y., Lee, A. M., Koh, Y. W., & Tang, C. S. K. (2019). Validation of the Chinese version of the Pregnancy-related Anxiety Questionnaire-Revised (PRAQ-R) and its distinction from general anxiety and depression in pregnant women. *Journal of Psychosomatic Obstetrics & Gynecology*, 1–9. DOI: 10.1080/0167482X.2019.1639042
- 3 Chan, C. Y., Lee, A. M., Koh, Y. W., Lam, S. K., Lee, C. P., Leung, K. Y., & Tang, C. S. K. (2019). Course, risk factors, and adverse outcomes of disordered eating in pregnancy. *International Journal of Eating Disorders*, <https://doi.org/10.1002/eat.23065>
- 4 Leung, L. C., Chan, K. W., & Tam, K. Y. (2019). Reconstruction of masculine identities through caring practices: The experiences of male caregivers in Hong Kong. *Journal of Family Issues*, 40(6), 764–784.
- 5 Cheung, P. L. A. (2019). The perception of neighbourly relationships of older people in urban China. *The Journal of Aging and Social Change*, 9 (4): 17–31. doi:10.18848/2576–5310/CGP/v09i04/17–31
- 6 Cheung, P. L. A. (2019). Changing perception of the rights and responsibilities in family care for older people in Urban China. *Journal of Aging & Social Policy*, 31(4), 298–320. doi: 10.1080/08959420.2019.1626324
- 7 Kwok, K. (2019). I am not getting your money: Boundary making and identities in immigrant economies in Hong Kong. *Social Transformations in Chinese Societies*, 15(2), 114–128.
- 8 賴建國 (2019) 〈形相雖變，信念不變〉，載於邵家臻、歐陽達初、趙維生 (合編) 《囚錮的社工：15封給社工的信》，香港：香港基督徒學會。頁122–126。
- 9 賴建國 (2019) 〈從爭取劏房舒緩政策看本地的政策倡議理論與實踐〉，載於香港社會服務聯會 (編) 《社區發展資料彙編2019：堅守、開拓、創新》，香港：香港社會服務聯會，超媒體出版社有限公司。頁238–254。
- 10 Lai, V. T. C. (2019). A Researcher, a Container, or Both? A Stance of a Researcher in a Qualitative Research with Bereaved Children. In *Challenges and Opportunities in Qualitative Research* (pp. 139–152). Springer, Singapore.
- 11 Lam, C. M., Kwong, W. M. & To, S. M. (2019). Has parenting changed over past decade? A qualitative study of generational shifts in parenting. *International Journal of Social Science and Humanity*, 9 (2), 42–47. DOI:10.18178/ijssh.2019.9.2.988
- 12 Leung, V. W. Y., Lam, C. M., & Liang, Y. (2019). Parents' expectations of familial elder care under the neoliberal Hong Kong society. *Journal of Family Issues*, online version on Sept 27, 2019. <https://doi.org/10.1177/0192513X19879189>
- 13 Shek, D. T. L., Lam, C. M., & Yang, Z. (2019). Division of labor in parenting amongst Chinese parents in Hong Kong. *International Journal of Child and Adolescent Health*, 12 (4):00–00.
- 14 Shek, D. T. L., Lam, C. M., & Zhu, X (2019). Parental expectations amongst Chinese parents in Hong Kong: Profiles and demographic correlates. I *International Journal of Child and Adolescent Health*, 12 (4):00–00.
- 15 To, S. M., Lam, C. M., & So, Y. Y. (2019), A Qualitative study of Rural-to Urban migrant Chinese mothers' experience in Mother-child interactions and self-evaluation, *Applied Research in Quality of Life*, 15, 813–833. Doi.org/10.1007/s11482-019-9704-x

- 16 Shek, D. T. L., Chai, C. W. C., Lu, H., Yu, L., Chan, K., Ho, W., Ma, C. M. S., Wu, F. K. Y., Leung, H., Lin, L., Law, M. Y. M. (2019). Development of undergraduate university students: A 4-year longitudinal case study in Hong Kong. *International Journal of Child and Adolescent Health*, 12 (1), 109–122.
- 17 Leung, Z. C. S., Ho, A. P. Y., Tjia, L.Y. N., Tam, R. K. Y., Chan, K. T., & Lai, M. K. W. (2019). Social impacts of work integration social enterprise in Hong Kong – Workfare and beyond. *International Journal of Social Entrepreneurship*, 10(2), 159–176.
- 18 Mo, Y. H., & O’ Donoghue, K. (2019). A snapshot of cyber supervision in Mainland China. *Qualitative Social Work*. <https://doi.org/10.1177/1473325019836714>
- 19 Mo, Y. H., & Odonoghue, K. (2019). Nurturing a budding flower: External supervisors support of the developmental needs of Chinese social workers in Shenzhen, China. *International Social Work*, 62(2), 950–964.
- 20 Mo, Y. H., Leung, T. L., & Tsui, M. S. (2019). Chaos in order: The evolution of social work supervision practice in the Chinese Mainland. *The Clinical Supervisor*, 1–21.
- 21 Li, Y. T., Chang, H. J., Lin, Y. H., Cheung, J. C. S., Pak, C. M., & Tsui, M. S. (2019). Utilisation patterns of home care services of long-term care programmes and primary caregivers’ workload in Taiwan. *China Journal of Social Work*, 12(1), 20–38.
- 22 O’Leary, P., & Tsui, M. S. (2019). From a small step to a milestone: A new journey for the journal, *International Social Work*, 62(1), 5–7.
- 23 O’Leary, P., & Tsui, M. S. (2019). Relationship are central to social work. *International Social Work*, 62 (4), 1181–1182
- 24 O’Leary, P., & Tsui, M. S. (2019). The base of social work: Relationship, client, evidence or values? *International Social Work*, 62 (5), 1327–1328
- 25 O’Leary, P., & Tsui, M. S. (2019). The nature of social work: Reflection over humanistic practice, *International Social Work*, 62(2), 481–482.
- 26 O’Leary, P., & Tsui, M. S. (2019). Working with differences and diversities: From discrimination to dignity. *International Social Work*, 62 (3), 1041–1042
- 27 Wong, Y. C., & Borowski, A. (2019 online first). The politics of ageing under a hybrid regime: The case of democratization in Hong Kong. *Journal of Aging and Social Policy*. <https://doi.org/10.1080/08959420.2019.1685348>
- 28 莫泰基、黃於唱 (2019)。《確立全國統一養老保險制度》。香港：中華書局。
- 29 吳慧明，2019：《淺探退休保障制度要應對的主要風險的管控策略選項》，《經濟管理文摘》，第 14 期，第159–162頁。
- 30 Tong, Canon, Wong, Anthony Tik-Tsuen and Cheng, Tim. (2019). Do Corporate Social Responsibility and Safety of Food Affect Reputation? A Study of Fast-food Restaurants Industry in Hong Kong, *Journal of Economics, Management and Trade*, 22(3):1–18.
- 31 Wong, Anthony Tik-Tsuen, Cheng, Tim and Tong, Canon. (2019). A Study of the Mediating Effects of Safety and Health of Food between Corporate Social Responsibility and Corporate Image and Reputation in Fast-Food Restaurants Industry in Hong Kong, *Journal of Economics, Management and Trade*, 23(4):1–13.
- 32 Chan, J. C. P., Shum, H. P. H., Wang, H., Yi, L., Wei, W., & Ho, E. S. L. (2019). A generic framework for editing and synthesizing multimodal data with relative emotion strength Editing and synthesizing multimodal data with emotion. *Comput Anim Virtual Worlds Computer Animation and Virtual Worlds*, e1871.

- 33 Zhang, Z., Han, C., He, S., Liu, X., Zhu, H., Hu, X., & Wong, T. T. (2019). Deep binocular tone mapping. *The Visual Computer*, 35(6–8), 997–1011.
- 34 Poon, G., Kwan, K. C., & Pang, W. M. (2019). Occlusion–robust bimanual gesture recognition by fusing multi–views. *Multimedia Tools and Applications*, 1–20
- 35 Chen X., Li M., Wang C., Wang C. & Zhao Y. (2019) Truthful Mechanisms for Location Games of Dual–Role Facilities. *Proceedings of the International Conference on Autonomous Agents and Multiagent Systems (AAMAS)* (pp. 1470–1478). <https://dl.acm.org/doi/10.5555/3306127.3331859>
- 36 Li M., Mei L., Xu Y., Zhang G. & Zhao Y. (2019) Facility Location Games with Externalities. Accepted by *International Conference on Autonomous Agents and Multiagent Systems (AAMAS)* (pp. 1443–1451) <https://dl.acm.org/doi/10.5555/3306127.3331856>
- 37 Wu, P., Fu, C., Li, M., Zhao, Y., Xue, C. J., & Han, S. (2018). Work–in–Progress: Joint Network and Computing Resource Scheduling for Wireless Networked Control Systems. In *2018 IEEE Real–Time Systems Symposium (RTSS)* (pp. 181–184). IEEE.
- 38 Wang, M., Hai, T., Feng, Z., Yu, D. G., Yang, Y., & Bligh, S.W.A. (2019). The relationships between the working fluids, process characteristics and products from the modified coaxial electrospinning of zein. *Polymers*, 11(8), 1287.
- 39 Y. Yang, T. Zhu, Z. Liu, M. Luo, D. G. Yu, Bligh, S.W.A. (2019). The key role of straight fluid jet in predicting the drug dissolution from electrospun nanofibers. *International Journal of Pharmaceutics*, 569, 118634.
- 40 Lau, T., Cheung, M. L., Pires, G., & Chan, W.Y. (2019). Customer satisfaction with sommelier services of upscale Chinese restaurants in Hong Kong. *International Journal of Wine Business Research*, 31 (4), 532–554.
- 41 So, W. K. W., Kwong, A. N. L., Chen, J. M. T., Chan, J. C. Y., Law, B. M. H., Sit, J. W. H., & Chan, C. W. H. (2019). A theory–based and culturally aligned training program on breast and cervical cancer prevention for South Asian community health workers: A feasibility study. *Cancer Nursing*, 42(2), E20–E30.
- 42 So, W.K.W., Kwong, A.N.L., Chen, J.M.T., Chan, J.C.Y., Law, B.M.H., Sit, J.W.H., & Chan, C.W.H. (2019). A theory–based and culturally aligned training program on breast and cervical cancer prevention for South Asian community health workers: A feasibility study. *Cancer Nursing*, 42(2), E20–E30.
- 43 Smith, G.D., & Penny, K.I. (2019). Enhancing research integrity in academic nursing: The introduction of registered reports. *Journal of Clinical Nursing*, 2, 1037–1038. doi:10.1111/jocn.14770
- 44 Tocher, J., Neades, B., Smith, G.D., & Kelly, D (2019). The role of specialist nurses for organ donation: A solution for maximising organ donation rates? *Journal of Clinical Nursing*, 28, 2020–2027. doi: 10.1111/jocn.14741
- 45 Smith, G.D. (2019). Tai Chi: A promising adjunct nursing intervention to reduce risks of cardiovascular disease and improve psychosocial well–being in adults with hypertension. *Evidence–Based Nursing*, 22(2), 45–47. doi:10.1136/ebnurs–2018–103007
- 46 Liu, B.C., Leung, D.S., & Warrener, J. (2019). The interaction effect of gender and residential environment, individual resources, and needs satisfaction on quality of life among older adults in the United Kingdom. *Gerontology & Geriatric Medicine*, 5, 2333721419878579. doi:10.1177/2333721419878579.
- 47 Lao, S.W.S., Low, L.P.L., & Wong K.Y.K. (2019). Older residents’ perceptions of family involvement in residential care. *International Journal of Qualitative Studies on Health and Wellbeing*, 14(1), 1611298. <https://doi.org/10.1080/17482631.2019.1611298>

- 48 Siu, M.Y. (2019). Association between use of internet and quality of life among young people in Hong Kong. *Nursing Practice and Health Care*, 1(1), 103. doi: 10.31021/nphc.20191103
- 49 Siu, M.Y. (2019). Nursing care for patients with osteoporotic fracture. *CHARM (Care, Health, and Arthritis and Rheumatism Management)*, Issue 13, 10–11.
- 50 Yip, K.H., Yip, Y.C., Lee, C.M.Y., Siu, M.Y., Ngai, S.Y., & Chow, M.K.Y. (2019). Young adults' perceptions of breastfeeding in public: A focus group study. *Frontiers of Nursing*, 7(3), 217–226. <https://doi.org/10.2478/fof-2020-0023>
- 51 Yip, C., Chan, W., & Fielding, R. (2019). The associations of fruit and vegetable intakes with burden of diseases: A systematic review of meta-analyses. *Journal of the Academy of Nutrition and Dietetics*, 119(3), 464–481.
- 52 Yip, Y.C. (2019). Self-stigmatisation among Chinese individuals with HIV in Hong Kong: Understanding the sociological basis of spiritually and culturally sensitive care. *HIV Nursing*, 19(2), 31–35.
- 53 Yip, Y.C. (2019). Overcrowding in emergency departments: Revealing the social perspectives through a medical sociological analysis. *Journal of Health and Social Sciences*, 4(3), 305–312.
- 54 Chan, F. N. K. (2019). Policies to Reform Religious Education in Hong Kong Catholic Schools, in *Global Perspectives on Catholic Religious Education in Schools -- Volume II: Learning and Leading in a Pluralist World*, Michael T. Buchanan and Adrian-Mario Gellel (eds.) Singapore: Springer Singapore, 617–628.
- 55 Chan, Sin-wai (2019) *A New Comprehensive Cantonese-Putonghua-English Dictionary (《粵普英順逆序大辭典》)*, Hong Kong: The Commercial Press.
- 56 Chan, Sin-wai (ed.) (2019) *《世界經典短篇小說精選：青春》* (Selected World Classic Short Stories: Youth), Beijing: 中國宇航出版社 China Astronautic Publishing House.
- 57 Chan, Sin-wai (ed.) (2019) *《世界經典短篇小說精選：時光》* (Selected World Classic Short Stories: Time), Beijing: 中國宇航出版社 China Astronautic Publishing House.
- 58 Chan, Sin-wai (ed.) (2019) *《世界經典短篇小說精選：童心》* (Selected World Classic Short Stories: Innocence), Beijing: 中國宇航出版社 China Astronautic Publishing House.
- 59 Chan, Sin-wai (ed.) (2019) *《世界經典短篇小說精選：愛情》* (Selected World Classic Short Stories: Love), Beijing: 中國宇航出版社 China Astronautic Publishing House.
- 60 Chan, Sin-wai (ed.) (2019) *《世界經典短篇小說精選：溫情》* (Selected World Classic Short Stories: Warmth), Beijing: 中國宇航出版社 China Astronautic Publishing House.
- 61 Chan, Sin-wai (ed.) (2019) *《世界經典短篇小說精選：諷刺》* (Selected World Classic Short Stories: Satire), Beijing: 中國宇航出版社 China Astronautic Publishing House.
- 62 Chan, Sin-wai (ed.) (2019) *《世界經典短篇小說精選：勵志》* (Selected World Classic Short Stories: Inspiration), Beijing: 中國宇航出版社 China Astronautic Publishing House.
- 63 Chan, Sin-wai (ed.) (2019) *《世界經典短篇小說精選：懸疑》* (Selected World Classic Short Stories: Suspense), Beijing: 中國宇航出版社 China Astronautic Publishing House.
- 64 范旭艷：〈杜定友《校讎新義》與傳統目錄學知識分化〉，《中山大學學報（社會科學版）》，2019年第6期。

- 65 Ng, W.K.V. & Luk, S.Y.F. (2019). Effective Tools for Pedagogical Change in Religious Education: Experience of Teachers in Hong Kong Catholic Kindergartens and Primary Schools. In: Buchanan M., Gellel AM. (eds) *Global Perspectives on Catholic Religious Education in Schools*. Springer, Singapore. https://doi.org/10.1007/978-981-13-6127-2_53
- 66 Ng, H. N., & Boey, K. W. (2019). An assessment of the knowledge and attitudes towards elderly sexuality. *Chinese Journal of Human Sexuality*, 28 (3) [in Chinese] doi: 10.3696/j.issn.1671672-1993.2019.03.000
- 67 Lee, P.C.W. (2016). A Discourse Description for Four Fund-raising Texts – Linguists Meet Practitioners: An Exploratory Study. (Journal) *Discourse and Interaction*, Published by the Department of English Language and Literature, Masaryk University, Brno, Czech Republic. ISSN: 1802-9930 (pp. 25-50). http://katedry.ped.muni.cz/anglictina/about_us/discourse-and-interaction/discourse-and-interaction-vol-10-no-2-2016/a-discourse-description-of-four-fund-raising-texts-linguists-meet-practitioners-an-exploratory-study

